

# CLEVERTOUCH®

## NEW UX Pro

Let the ideas flow without interruptions. Meet in huddle spaces, meeting rooms, or have colleagues call in remotely to share your screen. No wires, no waiting, no fuss. Share content from any device, on any platform, and use all the programmes, software and apps that your business relies on. Increase productivity and make your meetings more fluid.



## Powerful and feature-rich 4K touchscreen

### Comprehensive Warranty

Industry leading warranty tailored to your needs

NEW

### Microphone

Built-in line array microphone.

### Add any USB Camera

For a full unified comms solution.

### 4K

True 4K resolution and sharper user experience throughout

NEW

### High Precision Technology

Our patented Super Glide Touch technology offers the most fluid writing experience on a touchscreen. It's as smooth as writing on a presentation board - with no lag. With the ability to differentiate between palm-erase, fingertouch, and stylus-writing, there's no need to change settings mid-flow.

### Dual recognition stylus

Comfort stylus.

NEW



### Clever Account Profile with NFC

With an NFC sensor built into the bezel, just tap your NFC card on the bottom of the screen to instantly log in to your profile.

NEW

### Security Matters

Use a wireless or hardwired connection so that internal team members and visitors can connect safely using separate networks.

### No ongoing subscription charges.

### Environmentally Friendly Motion Detection

Equipped with Proximity Sensors your Clevertouch will power off when no one is detected in the room.

NEW

### Cloud Accounts

Sync with your Cloud accounts so that you can work anywhere at any time.



NEW

### Connectivity

Huge connectivity. Includes 2x USB-C ports.

NEW

### Room filling sound

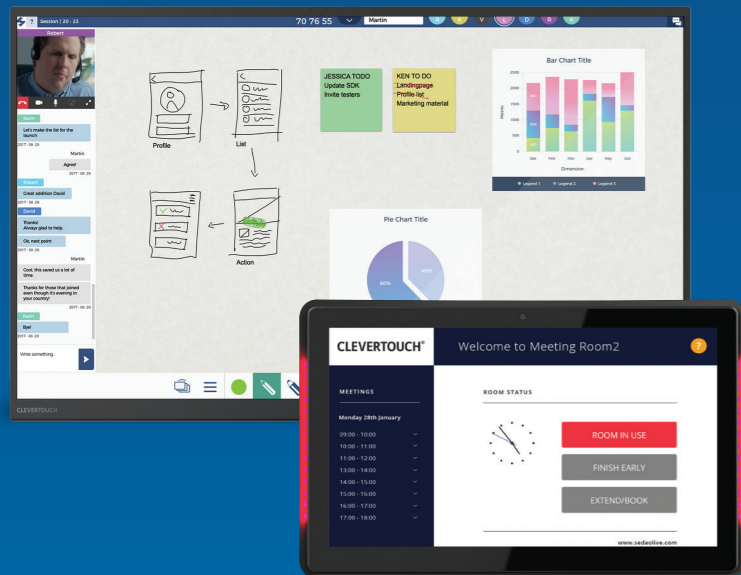
45W Max Power for room-filling sound.

# Redefining the User Experience

Streamlining communication is key. Collaboration is something we know every business needs, but is yours prepared for it?

Clevertouch has created the all-in-one Enterprise Ecosystem for the agile workplace, combining our new UX Pro touchscreen, integrated room booking and UC platform – one cost, no ongoing subscriptions and will fit seamlessly into your existing set up.

A real-time collaborative workspace that enables participants to work together, in an open environment, whilst ensuring that the collaboration systems and the underlying networks remain totally secure.



## Professional digital-signage ready Large Format Displays

Make a great first impression with a Digital Signage screen in your lobby. With hundreds of templates supporting landscape or portrait displays, fully customise video, images, RSS feeds and more.

## Way-finding

Guide people through your building and enhance their experience, whilst promoting your brand throughout open spaces.



## Collaborative Team Displays

With UX Pro experience crystal clear 4K quality video and sound.



## Room Booking

Sync with your MExchange or Office365 calendar to see instantly when a room is busy or available. Book the room with a single click.



## Unified Communications

Share projects with others and mark-up in real-time. Invite collaborators to join your meeting via video with STAGE.



## Remote Management

Allow your IT department to remotely take control and troubleshoot or make updates.



## CleverMessage™

Send your company's messages to every Clevertouch screen in an instant - alerts, photos, videos, news, announcements and more are all available with dozens of templates to choose from.

## Screen Mirroring

With Clevershare connect with any device, on any network. Includes touchback for two-way mirroring.



Your all-in-one solution from one provider:  
**CLEVERTOUCH®**

# How UX Pro works for enterprise



Cross platform works with any software and apps



Largest range of sizes available



Screen mirroring with built-in security controls



Seamless integration with existing set up



High Precision Technology



Send messages, alerts and media to all of your Clevertouch screens remotely

## Built in

With UX Pro everything you need in your meeting room is included at no extra costs with no ongoing subscription charges. Free of charge firmware updates. Remote management of an unlimited number of devices in tablet mode. Stage browser based UC software. Whiteboard app with handwriting recognition. Room booking system syncing with Outlook 365 and MS Exchange calendars. Clever Message signage app for on-brand messaging.

## Connectivity

Seven ways to access your files: 1/Cloud integration with One Drive, Google Drive, Office 365, and Dropbox. 2/Use one of three unlimited in-built web browsers to access web-based software. 3/Bring a flash drive into meetings and access via one of 3 USB-A 3.0 super fast ports. 4/Connect via cable to your laptop or device with no driver download required. 5/Use the Clevershare app and mirror your content to your Clevertouch, including touchback - your IT department can install this on all company laptops using the MSI file. 6/Plug-and-play with the Clevershare dongle, it connects to any USB-C port and casts direct to the Clevertouch display with no calibration needed. 7/Email the Clevertouch with any files you want to display.

## Security

We give you options. Lots of them. Go on-network or off-network. Wipe down your session when your meeting is finished. Have a walk-up-and-use off-network tablet environment for visitors, or a full Windows 365 on-network environment for trusted colleagues. Give NFC cards to your team and guests with different settings based on their security clearance level.

## Reliability

With the most comprehensive warranty on the market, UX Pro is designed for high use environments. Our support team is available when you need the most, making sure your meetings have no interruptions.

# Multi-award-winning business solutions



AV Display Innovation of the year  
AV News Awards  
2019 - Winner



Collaboration Product of the Year  
AV News Awards  
2018 - Winner



Collaboration Product of the Year  
AV News Awards  
2019 - Winner



Interactive Product of the Year  
AV Awards  
2017 - Winner



Manufacturer of the Year  
AV Awards  
2015 - Winner

# CleverMessage™

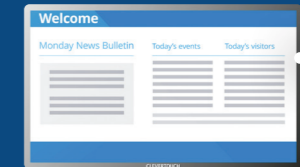
EXCLUSIVE TO CLEVERTOUCH

Transform your screen into a digital signage display when not being used for meetings. With CleverMessage you can broadcast messages, alerts and important information, such as greeting visitors or displaying the days's meetings.

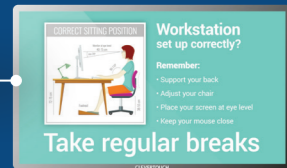
It's so easy and free to use!

- 1 Create an online account and connect your Clevertouch screens.
- 2 Add your logo images, YouTube channel, videos, posters and more.
- 3 Choose your template and schedule your alerts.

## Flexible Messaging Solutions



Daily news and activities

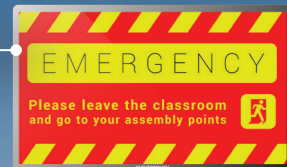


Full screen displays

Workstation set up correctly?  
Remember:  
- Support your back  
- Adjust your chair  
- Take your break at the time  
- Keep your mouse clean  
**Take regular breaks**



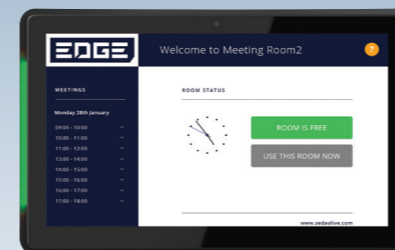
Live video messages



Emergency announcements and fire drills

# Enterprise Ecosystem

## Seamless integration



## Room Booking

- Show when the room is in use of when the next meeting is.
- Sync with your MS Exchange™ and Outlook 365 Calendars.
- Personalise with your Corporate colours and logos.
- Room Booking works with your Clevertouch.

## Flexible IT Computing Solutions



Upgrade to a Windows 10 Pro state-of-the-art latest Intel® OPS module.



From height adjustable mobile trolleys to wall mounts, we have a variety of solutions available to make your installation complete.

## Display

<b>Diagonal Size</b>	55" 4K, 65" 4K, 75" 4K, 86" 4K
<b>Screen Type</b>	TFT LCD - Direct LED Backlight
<b>Aspect Ratio</b>	16:9
<b>Display Colours</b>	1.07 Billion (10 bit)
<b>Resolution</b>	4K UHD (3840x2160 @60Hz)
<b>Response Time</b>	5ms
<b>Refresh Rate</b>	60Hz
<b>LCD Viewing Angle</b>	178°
<b>Brightness</b>	400 cd/m <sup>2</sup>
<b>Contrast Ratio</b>	55" 1200:1 65" 1200:1 75" 1200:1 86" 1200:1
<b>Dynamic Contrast Ratio</b>	55" 5000:1 65" 5000:1 75" 5000:1 86" 5000:1
<b>Glass Hardness</b>	Tempered Glass - Mohs Level 7
<b>Glass Type</b>	Heat tempered - Anti Glare - Super Glide Surface
<b>Main Board</b>	V811

## Interactivity

<b>Writing Technology</b>	High Precision Technology
<b>Continuous Touch Points</b>	20
<b>Touch Resolution</b>	32768x32768px
<b>Response Time</b>	5ms
<b>Touch Accuracy</b>	1.5mm
<b>Minimum Object Size</b>	3mm
<b>Touch Tool</b>	Finger, Gesture & Pen
<b>Simultaneous Writing</b>	Yes
<b>Pens Included</b>	2 with different colour assignment to each end
<b>Ink In Tools</b>	Yes – LYNX
<b>Pen Type</b>	Dual Recognition Stylus
<b>Pen Holder</b>	Integrated Full-length Pen Tray
<b>Pen Tip Diameter</b>	3mm/7mm
<b>Pen &amp; Touch Differentiation</b>	Yes
<b>Pen Identities</b>	2
<b>Annotation Over Any Source</b>	Yes
<b>Compatibility</b>	Windows 7 to 10, Windows XP, Linux, Mac, Android, Chrome
<b>Tracking Rate</b>	6m/s
<b>Scan Rate</b>	200Hz
<b>Gestures &amp; Edge Swipes</b>	Windows Supported

## Connectivity

<b>OPS Slot</b>	1 - Intel® spec
<b>HDMI In</b>	3
<b>HDMI Out</b>	1
<b>USB-A 2.0</b>	3 (1 for system upgrade)
<b>USB Touch (type B)</b>	3
<b>USB A 3.0 (faster data transfer)</b>	3
<b>USB C</b>	2 (One supports charging any device)
<b>LAN In (RJ45)</b>	1 GB
<b>RS-232</b>	Yes
<b>Wake-on-Lan</b>	Yes
<b>Wireless Adapter 2.0 + WAP</b>	Yes
<b>Bluetooth</b>	Yes
<b>Displayport In</b>	1
<b>VGA In</b>	1
<b>VGA Audio In</b>	1
<b>Optical Out</b>	1
<b>Headphone</b>	1
<b>Touch Out</b>	3
<b>NFC Reader / Writer</b>	Yes
<b>Camera</b>	Optional extra
<b>Proximity Sensor</b>	Yes
<b>WIFI Module</b>	Gen 2

## Computing

<b>Operating System</b>	Android Oreo 8
<b>System Version</b>	LUX 8
<b>RAM</b>	4GB
<b>Internal Storage</b>	32GB
<b>CPU</b>	Dual Core A73+Dual Core A53
<b>GPU</b>	Quad Core Mali G51
<b>Android Resolution</b>	4K
<b>Android Module Slot</b>	Yes
<b>Integrated LUX UI</b>	Yes

## Audio

<b>Dual Front Facing, Bass Enhanced Speakers</b>	2 x 15 Watt Speakers + 15 Watt Subwoofer
<b>Audio Out</b>	Yes
<b>SPDIF / Fibre</b>	Yes
<b>Sound Channel</b>	2.1
<b>Line Array Microphone</b>	Yes
<b>Super Wide Sound</b>	Yes

## Power

<b>Power Requirements</b>	100 – 240V ~ 50/60Hz
<b>Power Consumption (Normal)</b>	55" 87W 65" 118W 75" 124W 86" 172W
<b>Power Consumption (Standby)</b>	< 0.5 Watts
<b>Ultra Quiet Fanless Design</b>	Yes

## Operating & Storage Environment

<b>Operating Temperature</b>	0° to 40°
<b>Storage Temperature</b>	-20° to 60°
<b>Operating Humidity</b>	10% to 90% RH
<b>Storage Humidity</b>	10% to 90% RH
<b>Altitude</b>	Below 5000 metres

## Physical Specifications

<b>Panel Dimensions</b>	55" 1268x792x90mm 65" 1489x919x91mm 75" 1709.7x1042.4x94.8mm 86" 1957.2x1181.9x94.8mm
<b>Packed Dimensions</b>	55" 1428x878x220mm 65" 1697x1038x220mm 75" 1875x1208x280mm 86" 2146x1326x280mm
<b>Net Weight</b>	55" 31.25Kg 65" 43.95Kg 75" 56.73Kg 86" 73.45Kg
<b>Packed Weight</b>	55" 38.55Kg 65" 53.95Kg 75" 75.75Kg 86" 95.30Kg
<b>VESA Mount Point</b>	55" 400x200mm 65" 600x400mm 75" 800x400mm 86" 800x600mm

## Warranty

Warranty term and upgrade options vary by region. Contact your local reseller or distributor for information and visit [www.clevertouch.com/about/warranty](http://www.clevertouch.com/about/warranty)

## Compliance & Certification

**Regulatory Certification** CE, FCC, UL, Energy Star & EEC



## UX Pro Built-in Features

<b>NUITEQ™ Stage</b>	Yes
<b>Embedded Digital Signage</b>	Yes
<b>Clevershare™ Mirroring Any Device To The Board</b>	Free for the life of the screen (touch back)
<b>Integrated Personalised Accounts Profiles</b>	Yes
<b>Cloud Account Access</b>	OneDrive  Google Drive  Dropbox
<b>Embedded Room Booking</b>	Yes
<b>Whiteboard Annotation</b>	Yes
<b>Email Out Direct From Touchscreen</b>	Yes
<b>Scan QR Code For Saving Work</b>	Yes
<b>CleverMessage™ - Instant Alert Messaging</b>	Yes
<b>Over-the-Air Updates</b>	Yes
<b>Remote Management Of Touchscreens (MDM)</b>	Yes - Five year licence

## Packed Contents - Inside your Clevertouch Box

<b>What's In The Box</b>	(1) Clevertouch UX Pro (1) 1.5M Length HDMI Cable (1) 3M Length USB cable (A-B) (2) 1.5M USB-C Cable (1) 3M Regional Power Cable (1) 5M 3.5mm Audio Cable (1) Remote Control (2) Batteries for Remote Control (2) Dual Recognition Stylus (1) User Guide (1) Quick Install Guide (1) Wireless Adapter 2.0 + WAP (5) NFC Cards
--------------------------	---

## Installation

The installation of this product should be completed by a qualified installer. Use of components not supplied by Clevertouch or not meeting minimum specifications may impact performance, safety and warranty. For more information, visit [clevertouch.co.uk](http://clevertouch.co.uk)

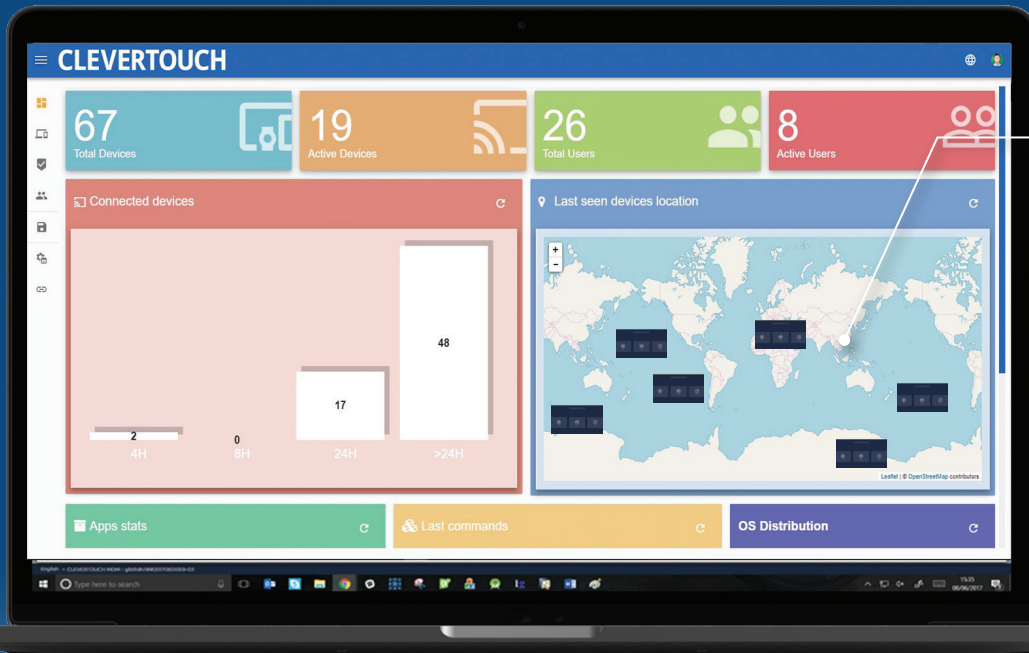
## Support

For all Clevertouch products, visit: [support.clevertouch.com](http://support.clevertouch.com)

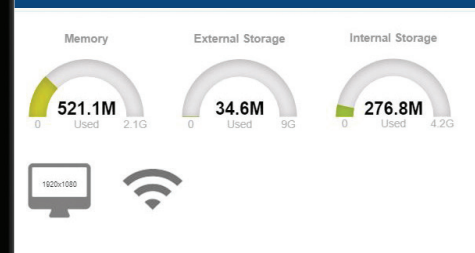
# Remote Management

Control multiple Clevertouch devices, wherever they are

With MDM the IT Department can remotely take control of your company's fleet of tablet-mode Clevertouch displays.



An overview of all your Clevertouch Displays



Update or Remove apps

View status information

View the Clevertouch screen

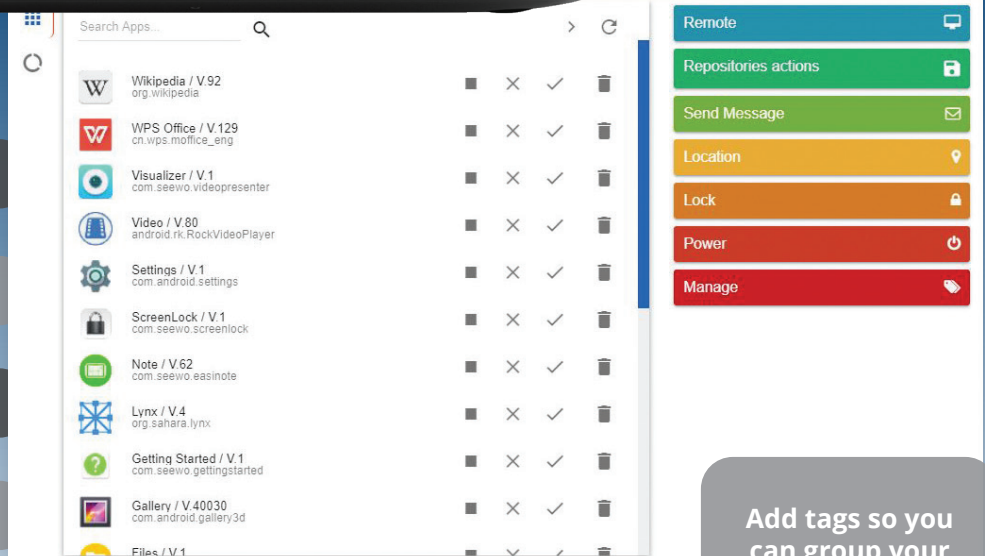
Install apps and files

Push messages to the Clevertouch

Lock and unlock a Clevertouch

Restart or Shutdown your Clevertouch

Add tags so you can group your Clevertouch fleet



View Individual Clevertouch Screens, update apps settings and more.

## Instant Over-the-Air Updates (OTA)

The new Over-the-Air technology means that new features, bug fixes, software and hardware updates can be seamlessly delivered to every Clevertouch screen. With just the click of a button the Clevertouch screen will search for the latest firmware update and install it, giving you instant access to the latest apps and features. Patch fixes no longer have to be downloaded onto a USB and uploaded manually, giving IT Managers more time and less hassle.